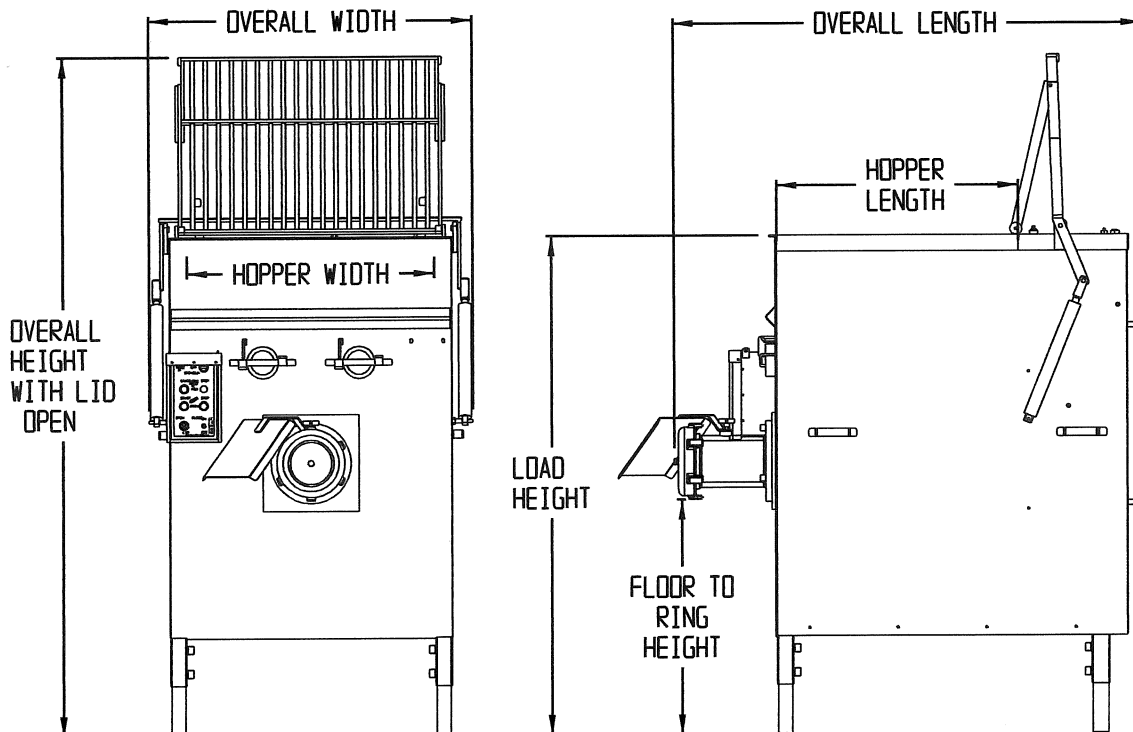


DANIELS FOOD EQUIPMENT

AFMG 400-56/66, 600-56/66, 800-56/66 MIXER GRINDERS



AFMG MODEL	400-56	400-66	600-56	600-66	800-56	800-66
OVERALL HEIGHT WITH LID OPEN	MIN 78-1/4" MAX 102-1/4"	MIN 79-1/2" MAX 103-1/2"	MIN 81" MAX 105"	MIN 82-1/8" MAX 106-1/4"	MIN 86-1/4" MAX 110-1/4"	MIN 87-1/2" MAX 111-1/2"
OVERALL WIDTH	40-1/4"	40-1/4"	47-1/2"	47-1/2"	47-7/16"	47-7/16"
HOPPER WIDTH	30-3/4"	30-3/4"	35-3/4"	35-3/4"	35-3/4"	35-3/4"
HOPPER LENGTH	30"	30"	32-1/2"	32-1/2"	37"	37"
OVERALL LENGTH	58"	58"	60-1/4"	59-3/4"	64-13/16"	64-1/2"
LOAD HEIGHT	MIN 55-7/8" MAX 79-7/8"	MIN 61-1/2" MAX 85-1/2"	MIN 57-1/4" MAX 81-3/8"	MIN 58-5/8" MAX 82-3/4"	MIN 60-5/16" MAX 84-5/16"	MIN 61-5/8" MAX 85-5/8"
CAPACITY	400 LBS.	400 LBS	600 LBS	600 LBS	800 LBS	800 LBS
WEIGHT	1800 LBS	1800 LBS	1900 LBS	1900 LBS	2000 LBS	2000 LBS
FLOOR TO RING HEIGHT	MIN 23-1/8" MAX 47-1/8"	MIN 22-1/8" MAX 46-1/8"	MIN 22" MAX 46"	MIN 21-5/8" MAX 45-5/8"	MIN 22" MAX 46"	MIN 21-5/8" MAX 45-5/8"

SPECIFICATIONS

ELECTRICAL:

GRINDER; 230 VOLT, 51 AMP, 1175 RPM, 60 Hz, 20 HP, 3 PH.
MIXER; 230 VOLT, 13.4 AMP, 1725 RPM, 60 Hz, 5 HP, 3 PH.

OPTIONAL:

GRINDER: 208/460/575 VOLT, 56.4/25.5/20.4 AMP, 1175 RPM, 60 Hz, 20 HP, 3 PH.
MIXER: 208/460/575 VOLT, 14.7/6.7/5.2 AMP, 1740 RPM, 60 Hz, 5 HP, 3 PH.

HOPPER:

HEAVY GAUGE STAINLESS STEEL CONSTRUCTION,
REMOVABLE PADDLES, AIR OPERATED TUBED HOPPER COVER.

OUTPUT:

#56 BOWL; 200 – 400 LBS. PER MINUTE, DEPENDS ON PLATE HOLE SIZE.
#66 BOWL; 400 – 500 LBS. PER MINUTE, DEPENDS ON PLATE HOLE SIZE.

DANIELS FOOD EQUIPMENT

310 NORTH CLAYBORN AVE. PARKERS PRAIRIE, MN. 56361 PHONE: (218) 338-5000 FAX (218) 338-5909.

WEB: www.danielsfood.com

E-MAIL: danielsfood@midwestinfo.net